

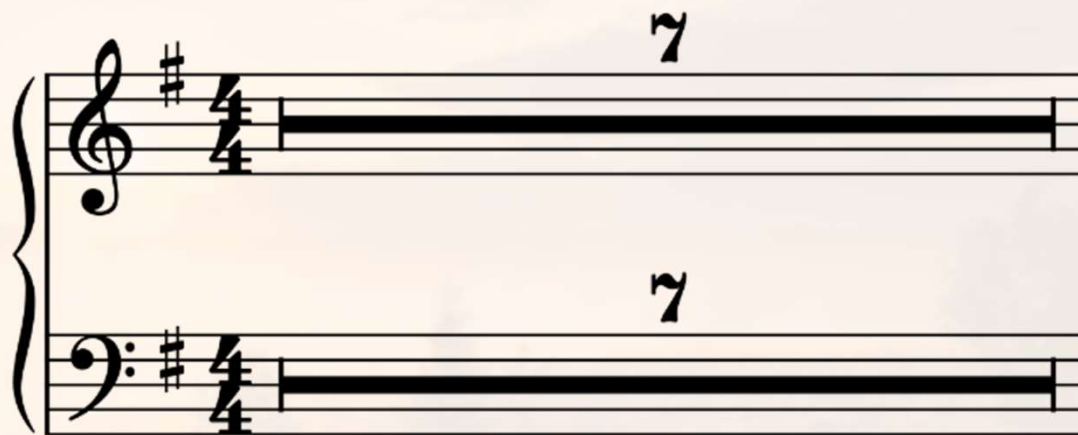


# The Parting Glass

Arr. Darrin Pettit

The image shows two musical staves, both in treble clef with a key signature of one sharp (F#) and a 4/4 time signature. The top staff has a measure number '9' above it, and the bottom staff has a measure number '9' below it. Both staves contain a solid black bar representing a whole note. A double bar line is present in the middle of each staff, and the number '8' is placed above the top staff and below the bottom staff to the right of the double bar line, indicating the start of the next measure.

(Orchestra Plays)



(Orchestra Plays)



Musical notation for the first system of a piano accompaniment in 4/4 time, key of D major. The first staff is the treble clef and the second is the bass clef. The music consists of quarter and eighth notes with rests.

Oh all the money that

**GET READY!**

Musical notation for the second system of a piano accompaniment in 4/4 time, key of D major. The first staff is the treble clef and the second is the bass clef. The music consists of quarter and eighth notes with rests.

e'er I had I\_\_ spent it in\_\_ good

Oh\_\_ all the mo\_ney that

e'er I had I\_\_ spent it in\_\_ good

com-pa-ny and\_ all the harm that\_

e'er I done a\_\_ las it was\_to\_

**none but me and all\_ I've\_done for**

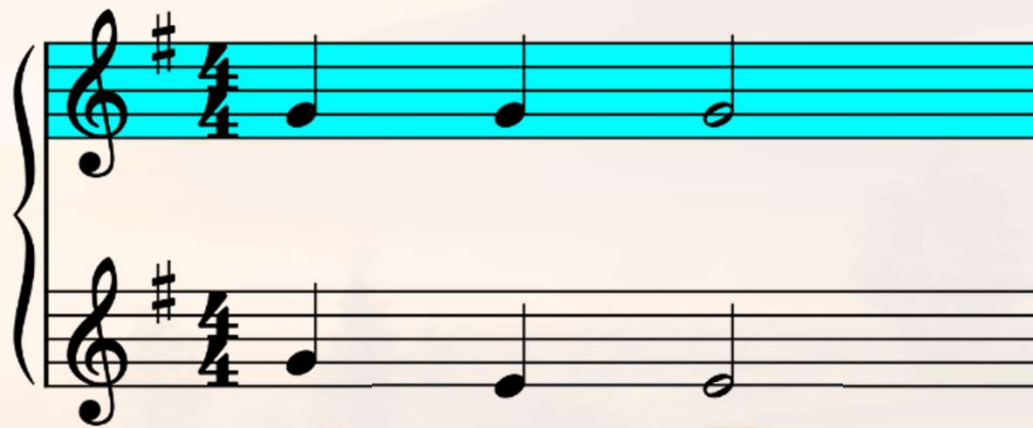
**want\_ of\_ wit, To mem-'ry now\_ I\_\_**



**can't re-call, So\_ fill to me the\_**

**par-ting glass good night and joy\_ be\_**





**with you all.**

The image shows two musical staves, both in treble clef with a key signature of one sharp (F#) and a 4/4 time signature. The top staff contains a whole rest for 8 measures, followed by a double bar line, and then another whole rest for 7 measures. The bottom staff contains a whole rest for 8 measures, followed by a double bar line, and then another whole rest for 7 measures. The rests are represented by thick horizontal black bars.

(Orchestra Plays)

Musical notation for the first system of a piano accompaniment in 4/4 time, key of D major. The first staff is the treble clef and the second is the bass clef. The music consists of quarter and eighth notes.

Oh all the mo ney that

**GET READY!**

Musical notation for the second system of a piano accompaniment in 4/4 time, key of D major. The first staff is the treble clef and the second is the bass clef. The music consists of quarter and eighth notes.

e'er I had I\_\_ spent it in\_\_ good



Oh\_\_ all the mo\_ney that

e'er I had I\_\_ spent it in\_\_ good

com-pa-ny and\_ all the harm that\_

e'er I done a\_\_ las it was\_to\_

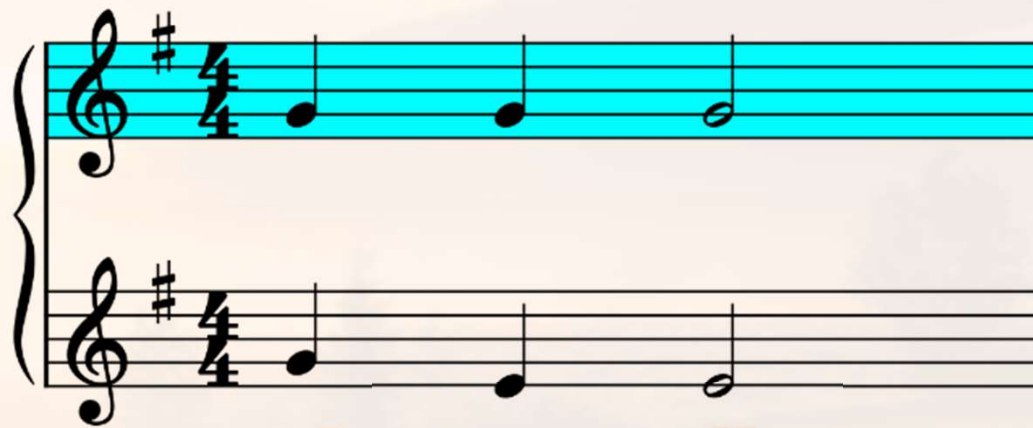
**none but me and all\_ I've\_done for**

**want\_ of\_ wit, To mem-'ry now\_ I\_\_**



can't re-call, So\_ fill to me the\_

par-ting glass good night and joy\_ be\_



**with you all.**

Musical notation for piano, consisting of two staves (treble and bass clef) in G major (one sharp) and 4/4 time. The notation shows two measures. The first measure contains a fermata over the entire staff, with the number '7' written above and below the staff. The second measure also contains a fermata over the entire staff, with the number '2' written above and below the staff.

(Orchestra Plays Out)





# The Parting Glass

Arr. Darrin Pettit